

### DETTAGLI

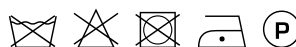
- Sfiancata
- Foderata
- 2 bottoni

### COLORE

- 119 Grigio
- 000 Nero
- 004 Blu

### TESSUTO

- 53% poliestere
- 43% lana
- 4% elasthan
- 173 g / m<sup>2</sup>



Le misure indicate si riferiscono alle taglie **S** per i capi femminili, **L** per i capi maschili. Per i capi a taglia unica le misure indicate sono effettive.

### COLORI DISPONIBILI



119 Grigio

000 Nero

004 Blu

TABELLE TAGLIE  
E CORRISPONDENZE

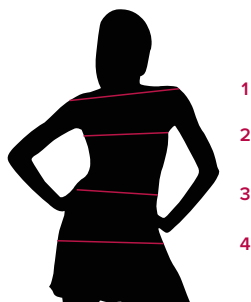
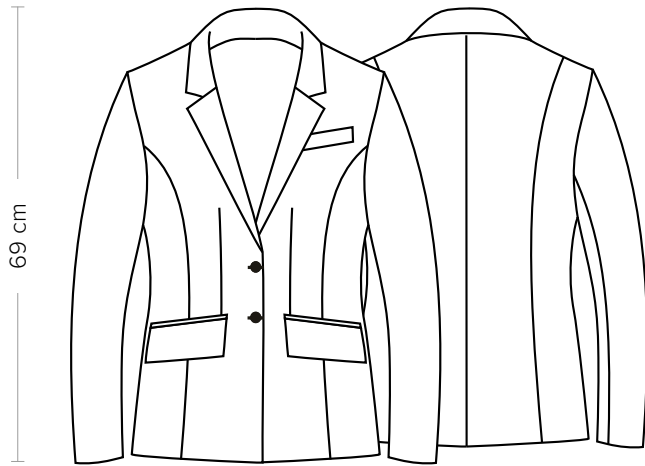


TABELLA ST-C3 SLIM FIT							
TAGLIA	XS	S	M	L	XL	XXL	XXXL
1 - SPALLE	38,00	39,00	40,00	41,00	42,00	43,00	44,00
2 - CIRCONFERENZA TORACE	83-86	87-90	91-94	95-98	99-104	105-110	111-116
3 - CIRCONFERENZA VITA	68-71	72-75	76-79	80-83	84-90	91-98	99-105
4 - CIRCONFERENZA BACINO							

**GUIDA ALLE TAGLIE** **1)** Prendere le misure anatomiche (corpo con abbigliamento intimo) senza stringere mantenendo ben teso il metro. **Nota:** nel caso vogliate indossare dei camici già con dell'abbigliamento sotto prendete le misure già abbigliati. **2)** Nel caso tra le misure prese vi fosse una misura a cavallo fra 2 taglie vi consigliamo di prendere quella più grande. **3)** Le misure della tabella sono espresse in centimetri.



**DETAILS**

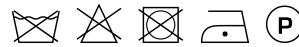
- Tight waisted
- Lined
- 2 buttons

**COLOURS**

- 119 Grey
- 000 Black
- 004 Blue

**FABRIC**

- 53% polyester
- 43% wool
- 4% elastane
- 173 g / m<sup>2</sup>



**SIZES**

- XS ÷ XXXL
- Slim Fit

The measures indicated refer to sizes **S** for women, **L** for men. For one-size-fits-all garments, the measurements indicated are effective.

**AVAILABLE COLOURS**



119 Grey

000 Black

004 Blue

SIZE TABLES  
AND CORRESPONDENCES

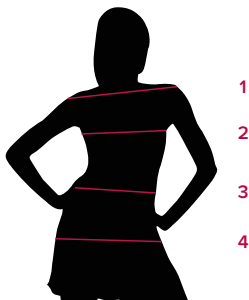


TABLE ST-C3 SLIM FIT							
SIZE	XS	S	M	L	XL	XXL	XXXL
1 - SHOULDERS	38,00	39,00	40,00	41,00	42,00	43,00	44,00
2 - CHEST CIRCUMFERENCE	83-86	87-90	91-94	95-98	99-104	105-110	111-116
3 - WAIST CIRCUMFERENCE	68-71	72-75	76-79	80-83	84-90	91-98	99-105
4 - HIPS CIRCUMFERENCE							

**SIZE GUIDE** **1)** Take the anatomical measurements (body with underwear) without tightening, keeping the measuring tape taut. Note: in case you want to wear of the gowns already with the clothing underneath take the measurements already dressed. **2)** If there is a measure between 2 sizes between the measurements taken, we advise you to take the bigger one. **3)** The measurements in the table are expressed in centimeters.