

### DETTAGLI

- Sfiancata
- Foderata
- 3 bottoni
- 2 spacchi laterali

### COLORE

- 119 Grigio
- 000 Nero
- 004 Blu

### TESSUTO

- 53% poliestere
- 43% lana
- 4% elasthan
- 173 g / m<sup>2</sup>



Le misure indicate si riferiscono alle taglie **S** per i capi femminili, **L** per i capi maschili. Per i capi a taglia unica le misure indicate sono effettive.

### COLORI DISPONIBILI



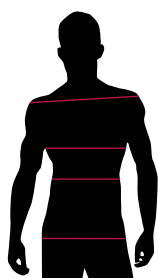
119 Grey



000 Black



004 Blue



### TABELLE TAGLIE E CORRISPONDENZE TABELLA ST-C1 SLIM FIT

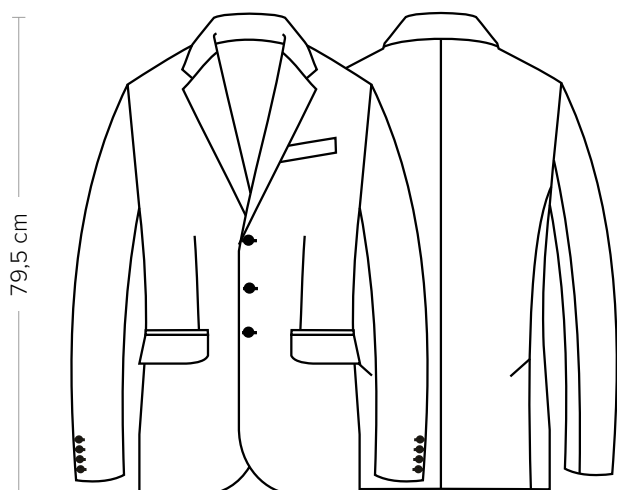
	40	42	44	46	48	50	52	54	56	58	60	62	64
<b>1</b> SPALLE	39,00	40,00	41,00	42,00	43,00	44,00	45,00	47,00	46,00	48,00	49,00	50,00	51,00
<b>2</b> TORACE	85-88	89-92	93-96	97-100	101-104	105-108	109-112	113-117	114-121	122-125	126-129	130-133	134-137
<b>3</b> VITA	77-81	82-85	86-89	90-93	94-97	98-101	101-105	106-110	111-116	117-121	122-125	126-129	130-134

**GUIDA ALLE TAGLIE** **1)** Prendere le misure anatomiche (corpo con abbigliamento intimo) senza stringere mantenendo ben teso il metro. **Nota:** nel caso vogliate indossare dei camici già con dell'abbigliamento sotto prendete le misure già abbigliati. **2)** Nel caso tra le misure prese vi fosse una misura a cavallo fra 2 taglie vi consigliamo di prendere quella più grande. **3)** Le misure della tabella sono espresse in centimetri.

# DAMIANO

ITEM CODE  
12P01C230

**Giblor's**  
italian work/life specialist



## DETAILS

- Tight waisted
- Lined
- 3 buttons
- 2 side vents

## SIZES

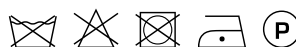
42 ÷ 62  
Slim Fit

## COLOURS

119 Grey  
000 Black  
004 Blue

## FABRIC

53% polyester  
43% wool  
4% elastane  
173 g / m<sup>2</sup>



The measures indicated refer to sizes **S** for women, **L** for men. For one-size-fits-all garments, the measurements indicated are effective.

## AVAILABLE COLOURS



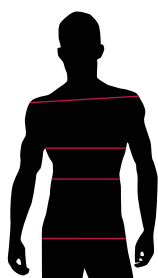
119 Grey



000 Black



004 Blue



## SIZE TABLES AND CORRESPONDENCES TABLE ST-C1 SLIM FIT

	40	42	44	46	48	50	52	54	56	58	60	62	64
<b>1</b> SHOULDERS	39,00	40,00	41,00	42,00	43,00	44,00	45,00	47,00	46,00	48,00	49,00	50,00	51,00
<b>2</b> CHEST	85-88	89-92	93-96	97-100	101-104	105-108	109-112	113-117	114-121	122-125	126-129	130-133	134-137
<b>3</b> WAIST	77-81	82-85	86-89	90-93	94-97	98-101	101-105	106-110	111-116	117-121	122-125	126-129	130-134

**SIZE GUIDE 1)** Take the anatomical measurements (body with underwear) without tightening, keeping the measuring tape taut. Note: in case you want to wear of the gowns already with the clothing underneath take the measurements already dressed. **2)** If there is a measure between 2 sizes between the measurements taken, we advise you to take the bigger one. **3)** The measurements in the table are expressed in centimeters.